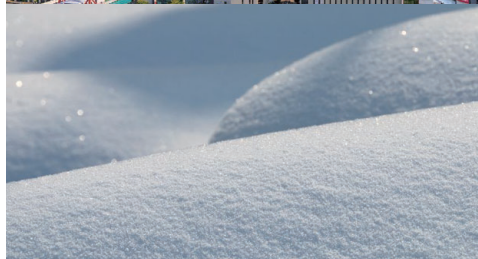
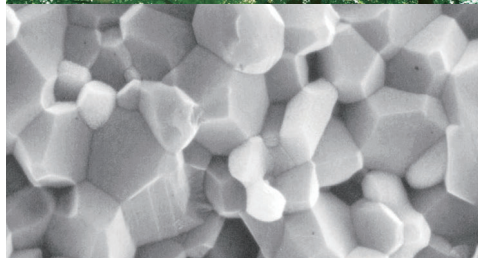
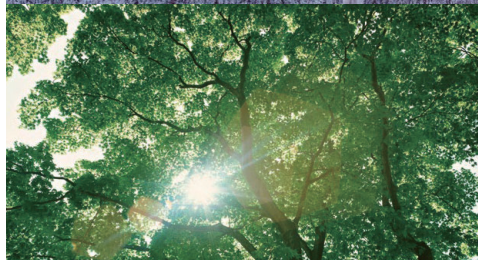
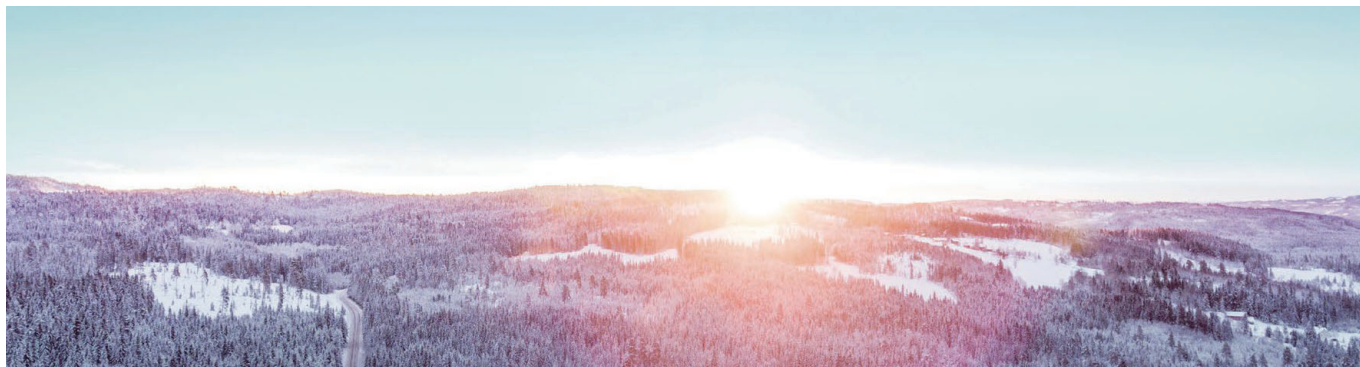


Research Centers



IF

Institute of Research Life Style and Environment for Future

To prevent various potential problems related to the living environment of cold regions, this laboratory promotes research and development to create a new interdisciplinary or integrated academic domain, to produce the maximum synergistic effect of people and technology in various academic fields, including medicine, machinery, information, electricity, construction and civil engineering.

LAM

Laboratory of Advanced Materials for Cold Regions

The main focus of this laboratory is on three areas – leading-edge materials/materials processing, semiconductor/electronic device materials and building structure materials. It aims to contribute to local communities and residents by effectively utilizing intellectual and human resources owned by the university to solve various issues in biomaterial fields. The aim of the center is to promote the revitalisation of Hokkaido's regional industries while cooperation with companies in the above three areas. For furthermore it focuses on manufacturing for cold regions.

RINC

Research Institute of Northern Regional Community

At this laboratory, a cross-sectional, collaborative research group has been formed by researchers in the arts, social sciences and engineering who are involved in research on various problems in local communities, mainly in Hokkaido. This group cooperates with various municipalities, companies, NPOs and other entities to promote research on human resource development, local culture, tourism and sustainable social systems. Scholars from elsewhere and businesspeople are also invited here as research associates to conduct joint studies.

LAAN

Laboratory of Active Ageing in the North

This laboratory is directly involved in efforts to address the "2025 problem" related to the sharp increase in the population of people 75 years and older, as well as the "2035 problem" caused by the considerable drop in the Japanese population; namely, the significant rise in the number of people who will need nursing care and the potential serious shortage of caregivers. It also promotes research to prepare for the Integrated Community Care System that the Ministry of Health, Labour and Welfare declared to adopt from the 2018 fiscal year.

CRILS

Creation Research Institute of Life Science in KITA-no-DAICHI

On 1 April 2020, our university established this institute to form a research hub for life science that understands life phenomena from a scientific perspective while contributing to the improvement of people's health and welfare through research in life sciences, in collaboration with medicine, pharmaceuticals and engineering.