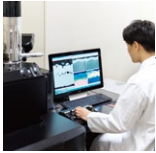


# Faculties & Departments

---

## ■ Graduate School



### Graduate School of Engineering (Master's and Doctoral Program)

---

HUS provides university graduates with opportunities to pursue specialized research at its graduate schools. Through master's and doctoral program, the institution seeks to develop technical experts, researchers and university faculty members with a creative spirit

#### • Division of Mechanical Engineering (Master's Program)

Mechanical engineers who can actively participate in industrial research and development supporting Japan are trained by a curriculum that has been carefully developed to acquire a basic mechanical engineering background, as well as advanced expertise and extensive knowledge in the specialized area of mechanics.

\*The name was changed from the previous "Division of System Mechanical Engineering (Master's Program)" in April 2015.

#### • Division of Electrical and Electronic Engineering (Master's Program)

Researchers who can address advanced subjects of the next generation and engineers who can engage in advanced professional services are trained by promoting education and research in electrical engineering and its applied fields, both from theoretical and technological aspects.

#### • Division of Information Engineering (Master's Program)

Advanced professional engineers and researchers who can solve various problems related to information engineering are trained through the promotion of research in networking, artificial intelligence, software, game design and other cutting-edge fields from both technological and theoretical aspects.

#### • Division of Biomedical Engineering (Master's Program)

It is a research field that can directly contribute to the health and welfare of humans. The program is aimed to train engineers and researchers who can handle various subjects based on the knowledge they acquire in more advanced and specialized medical/clinical engineering and prosthetics.

#### • Division of Electrical Engineering (Doctoral Program)

Engineers/researchers who can engage in advanced professional services are trained by promoting research in cutting-edge fields, including high-temperature superconductivity, new materials, devices, communication technologies, neuro-computing, programming techniques and artificial intelligence.

\*The admission of students was suspended in April 2016.

#### • Division of Architecture (Master's Program)

Hokkaido's first master's program in architecture at a private university was established in 1990 to train advanced engineering professionals and researchers who can respond to the development of architecture (architectural engineering). Research is conducted in close collaboration with the local community.

\*The name was changed from the previous "Division of Architectural Engineering (Master's Program)" in April 2015.

#### • Division of Civil and Environmental Engineering (Master's Program)

Highly creative engineers who can lead a new era are trained through comprehensive research in a wide range of urban environmental study fields related to the establishment of an ideal infrastructure that promotes harmony with nature taking the characteristics of cold regions into consideration.

The name was changed from the previous "Division of Civil Engineering (Master's Program)" in April 2015.

#### • Division of Engineering (Doctoral Program)

An interdisciplinary collaborative research system that eliminates the traditional vertical division of engineering education has been created through the development and fusion of conventional engineering disciplines, including mechanical engineering, information engineering, electrical and electronic engineering, biomedical engineering, architectonics, and civil and environmental engineering. The Division of Engineering produces researchers and highly professional engineers with management and leadership skills who are capable of resolving problems from a higher perspective.

\*Established in April 2016.